

**September 12, 2012**

**UNCONSCIOUS BIAS AND THE CRIMINAL  
JUSTICE SYSTEM**



**A Presentation to the Ohio Courts of Appeals  
Judges Association (OCAJA)  
Fall Conference 2012**

**Sharon L. Davies**  
John C. Elam/Vorys Sater Professor of Law  
Moritz College of Law, The Ohio State University  
Executive Director  
Kirwan Institute for the Study of Race and Ethnicity

# RACISM

Updating our  
Understanding of how  
Race Operates in 2012.



If Only It Were This Easy To Spot

# WHAT IS UNCONSCIOUS OR IMPLICIT RACIAL BIAS?






# The Unconscious Mind

The human brain can take in 11 million pieces of information in any one moment.

We're only consciously aware of maybe 40 of these - at best.





Lime, Green  
Lemon, Yellow  
Sky, \_\_\_\_\_



Night and \_\_\_\_\_

Black and \_\_\_\_\_

Young and \_\_\_\_\_

I cdnuolt blveiee taht I cluod aulacly uesdnatnrd  
waht I was rdanieg.



According to a research at Cambridge University, it doesn't matter in what order the letters in a word are, the only important thing is that the first and last letter be in the right place. The rest can be a total mess and you can still read it without a problem. This is because the human mind does not read every letter by itself, but the word as a whole.

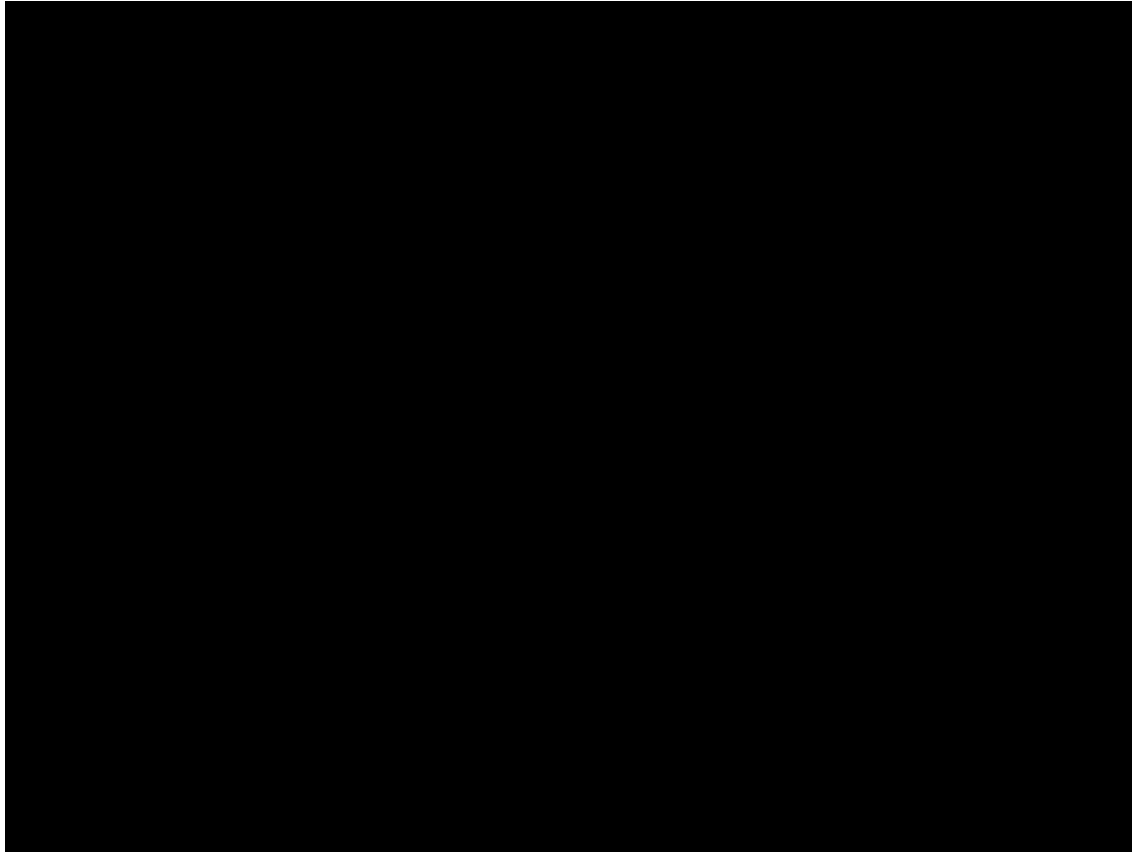
Amazing huh?... and I always thought spelling was important.



17 X 24



# Awareness Test

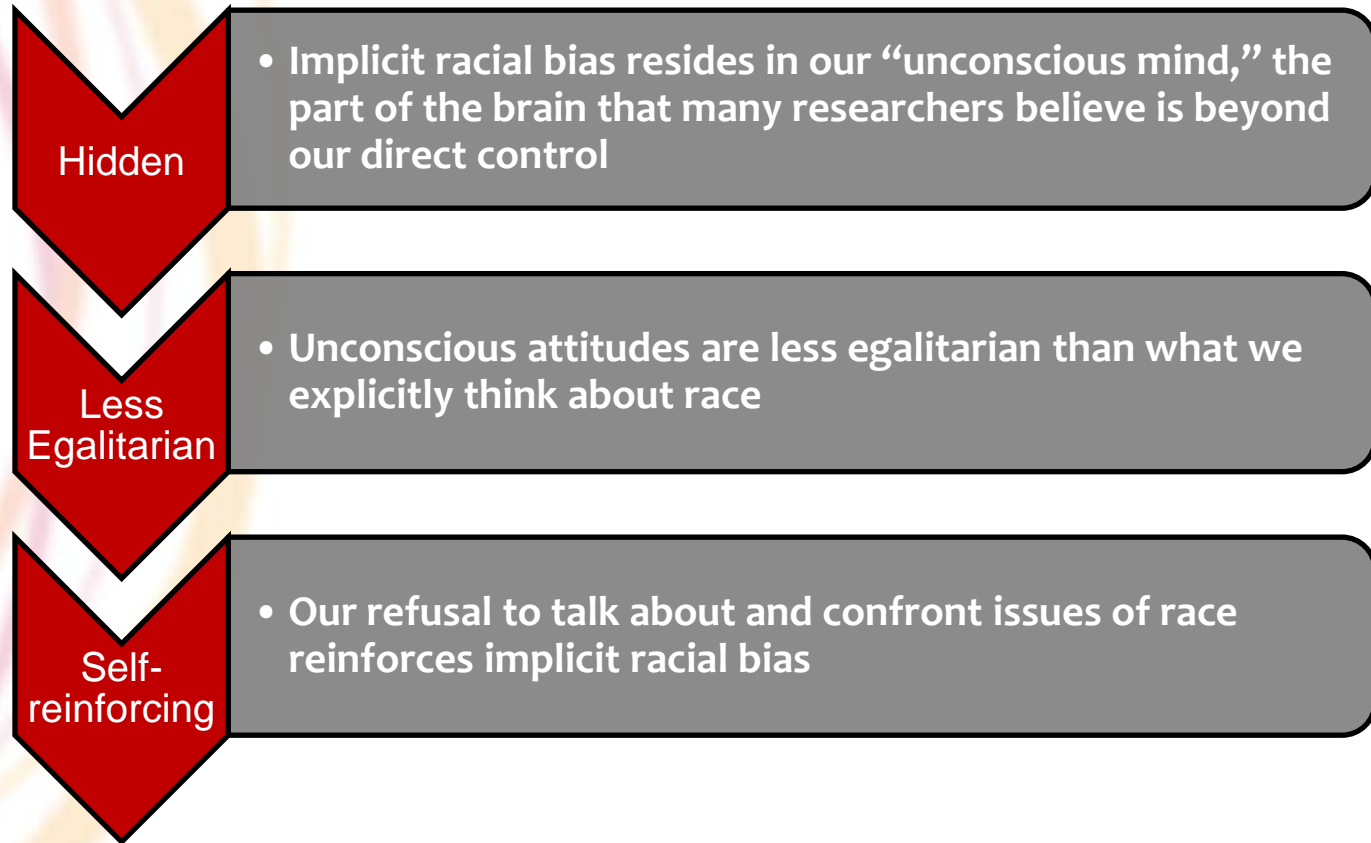


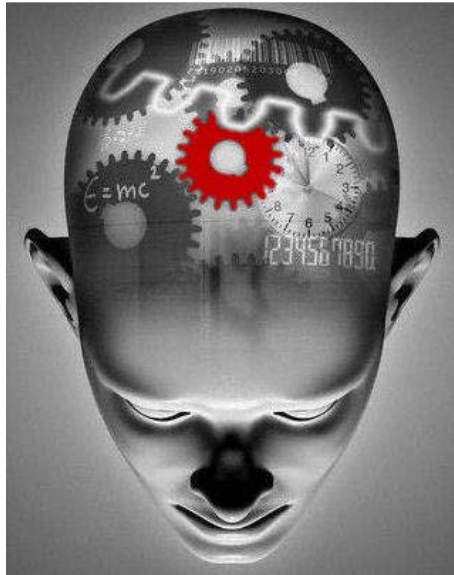
<http://www.youtube.com/watch?v=yrqrkihlw-s>

Whenever we encounter a person unknown to us, all of the associative beliefs and stereotypes stored in our brains that connect to his or her gender, age, class and race are automatically and unconsciously triggered.



Implicit biases operate largely automatically, outside of our conscious awareness or control.





# The State of the Science

## The Implicit Association Test (IAT)

European-American

African-American



# Associative Congruence or Associative Incongruence

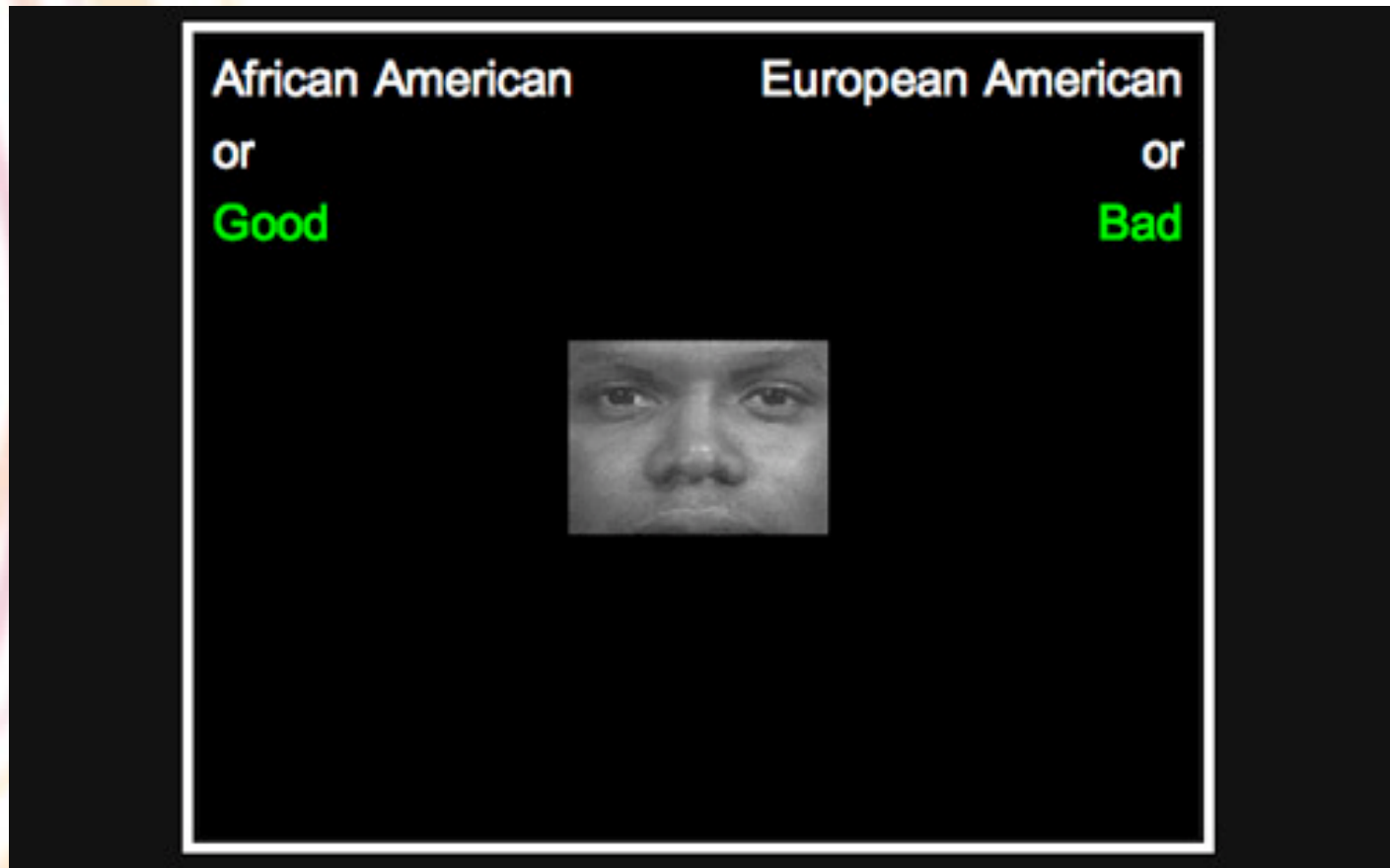
**African-American**  
*or*  
**Good**



**European-American**  
*or*  
**Bad**



# IMPLICIT ASSOCIATION TEST (IAT) FOR RACE

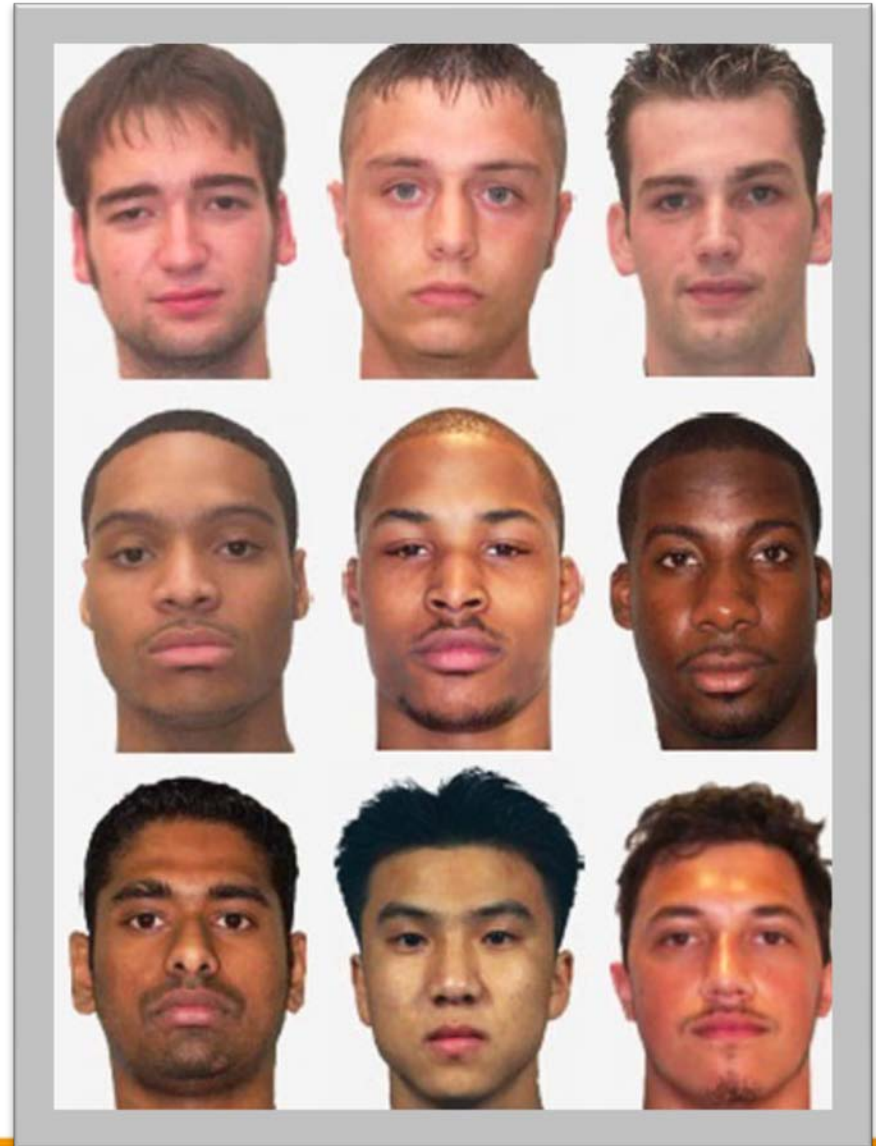


# The shooter studies



# IMPLICATIONS OF IMPLICIT RACIAL BIAS

## Criminal Justice





*the dilemma*

*of*

RACIAL

PROFILING

# MIGHT RACE OR AFROCENTRIC FEATURES IMPACT EVALUATIONS OF EVIDENCE, LENGTH OF AN IMPOSED SENTENCE, DEATH PENALTY DECISIONS?



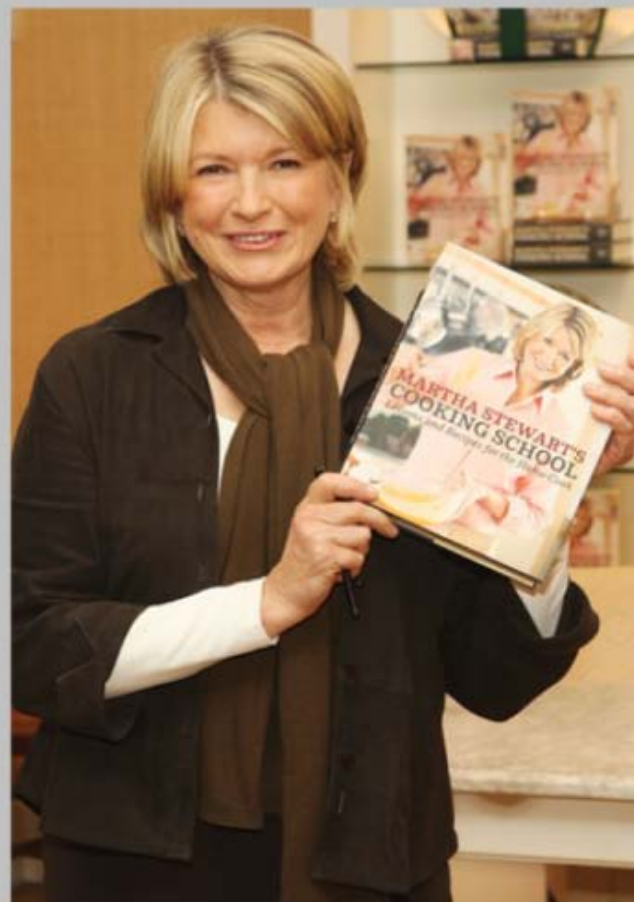
These images are the faces of people with no criminal history and are shown here for illustration purposes only. The face on the right would be considered more stereotypically Black than the face on the left.

# Schools as the Entry Point— Disproportionate Punishment



Every man has reminiscences which he would not tell to everyone but only to his friends. He has other matters which he would not reveal even to his friends but only to himself, and that in secret. But there are other things that a man is afraid to tell, even to himself, and every decent man has a number of such things stored away in his mind.

– Fyodor Dostoyevsky



Be Careful of Stereotypes!  
Only One of Them is a Convicted Felon.





Kirwan Institute for the Study of Race and Ethnicity  
33 West 11<sup>th</sup> Avenue  
Columbus, Ohio 43201  
[www.kirwaninstitute.org](http://www.kirwaninstitute.org)  
614-688-5429

This presentation can be accessed at the following web address:  
<http://kirwaninstitute.osu.edu/presentation-implicit-bias-education/>